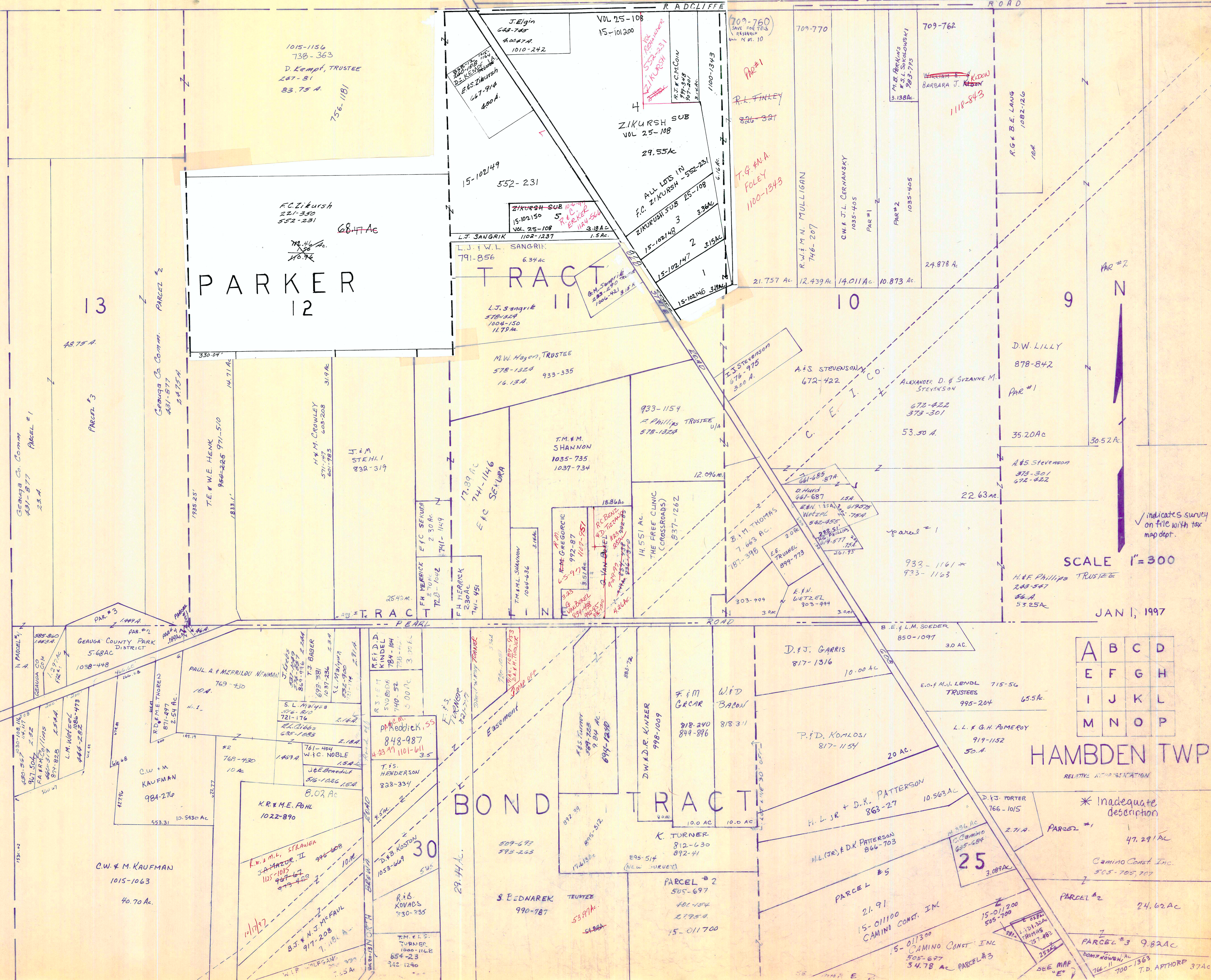


C H A R D O N T W P



PARKER TRACT II

BOND TRACT

HAMB DEN TWP

A	B	C	D
E	F	G	H
I	J	K	L
M	N	O	P

SCALE 1" = 300

JAN 1, 1997

✓ indicates survey on file with tax map dept.

* Inadequate description

Camino Const. Inc. 505-705, 707

PARCEL #3 9.82AC

766-11 700-1363 T.D. APTHORP 37AC

1015-1156
736-363
D. Kempf, TRUSTEE
267-81
83.75 A.
756-1181

F.C. ZIKURSH
221-350
552-231
68.47 Ac
78.46 Ac
40.92

ZIKURSH SUB
VOL 25-108
29.55 Ac

ALL LOTS IN
F.C. ZIKURSH - 552-231
ZIKURSH 508 25-108
3.96 Ac

ZIKURSH 508 25-108
3.96 Ac

15-102147 3.15 Ac

15-102146 3.15 Ac

15-102149 552-231

15-102150 552-231

15-102148 3.15 Ac

15-102147 3.15 Ac

15-102146 3.15 Ac

15-102149 552-231

15-102150 552-231

15-102148 3.15 Ac

15-102147 3.15 Ac

15-102146 3.15 Ac

15-102149 552-231

15-102150 552-231

15-102148 3.15 Ac

15-102147 3.15 Ac

15-102146 3.15 Ac

15-102149 552-231

15-102150 552-231

15-102148 3.15 Ac

15-102147 3.15 Ac

15-102146 3.15 Ac

15-102149 552-231

15-102150 552-231

15-102148 3.15 Ac

15-102147 3.15 Ac

15-102146 3.15 Ac

15-102149 552-231

15-102150 552-231

15-102148 3.15 Ac

15-102147 3.15 Ac

15-102146 3.15 Ac

15-102149 552-231

15-102150 552-231

15-102148 3.15 Ac

15-102147 3.15 Ac

15-102146 3.15 Ac

15-102149 552-231

15-102150 552-231

15-102148 3.15 Ac

15-102147 3.15 Ac

15-102146 3.15 Ac

15-102149 552-231

15-102150 552-231

15-102148 3.15 Ac

15-102147 3.15 Ac

15-102146 3.15 Ac

15-102149 552-231

15-102150 552-231

15-102148 3.15 Ac

15-102147 3.15 Ac

15-102146 3.15 Ac

15-102149 552-231

15-102150 552-231

15-102148 3.15 Ac

15-102147 3.15 Ac

15-102146 3.15 Ac

15-102149 552-231

15-102150 552-231

15-102148 3.15 Ac

15-102147 3.15 Ac

15-102146 3.15 Ac

15-102149 552-231

15-102150 552-231

15-102148 3.15 Ac

15-102147 3.15 Ac

15-102146 3.15 Ac

15-102149 552-231

15-102150 552-231

15-102148 3.15 Ac

15-102147 3.15 Ac

15-102146 3.15 Ac

15-102149 552-231

15-102150 552-231

15-102148 3.15 Ac

15-102147 3.15 Ac

15-102146 3.15 Ac

15-102149 552-231

15-102150 552-231

15-102148 3.15 Ac

15-102147 3.15 Ac

15-102146 3.15 Ac

15-102149 552-231

15-102150 552-231

15-102148 3.15 Ac

15-102147 3.15 Ac

15-102146 3.15 Ac

15-102149 552-231

15-102150 552-231

15-102148 3.15 Ac

15-102147 3.15 Ac

15-102146 3.15 Ac

15-102149 552-231

15-102150 552-231

15-102148 3.15 Ac

15-102147 3.15 Ac

15-102146 3.15 Ac

15-102149 552-231

15-102150 552-231

15-102148 3.15 Ac

15-102147 3.15 Ac

15-102146 3.15 Ac

15-102149 552-231

15-102150 552-231

15-102148 3.15 Ac

15-102147 3.15 Ac

15-102146 3.15 Ac

15-102149 552-231

15-102150 552-231

15-102148 3.15 Ac

15-102147 3.15 Ac

15-102146 3.15 Ac

15-102149 552-231

15-102150 552-231

15-102148 3.15 Ac

15-102147 3.15 Ac

15-102146 3.15 Ac

15-102149 552-231

15-102150 552-231

15-102148 3.15 Ac

15-102147 3.15 Ac

15-102146 3.15 Ac

15-102149 552-231

15-102150 552-231

15-102148 3.15 Ac

15-102147 3.15 Ac

15-102146 3.15 Ac

15-102149 552-231

15-102150 552-231

15-102148 3.15 Ac

15-102147 3.15 Ac

15-102146 3.15 Ac

15-102149 552-231

15-102150 552-231

15-102148 3.15 Ac

15-102147 3.15 Ac

15-102146 3.15 Ac

15-102149 552-231

15-102150 552-231

15-102148 3.15 Ac

15-102147 3.15 Ac

15-102146 3.15 Ac

15-102149 552-231

15-102150 552-231

15-102148 3.15 Ac

15-102147 3.15 Ac

15-102146 3.15 Ac

15-102149 552-231

15-102150 552-231

15-102148 3.15 Ac

15-102147 3.15 Ac

15-102146 3.15 Ac

15-102149 552-231

15-102150 552-231

15-102148 3.15 Ac

15-102147 3.15 Ac

15-102146 3.15 Ac

15-102149 552-231

15-102150 552-231

15-102148 3.15 Ac

15-102147 3.15 Ac

15-102146 3.15 Ac

15-102149 552-231

15-102150 552-231

15-102148 3.15 Ac

15-102147 3.15 Ac

15-102146 3.15 Ac

15-102149 552-231

15-102150 552-231

15-102148 3.15 Ac

15-102147 3.15 Ac

15-102146 3.15 Ac

15-102149 552-231

15-102150 552-231

15-102148 3.15 Ac

15-102147 3.15 Ac

15-102146 3.15 Ac

15-102149 552-231

15-102150 552-231

15-102148 3.15 Ac

15-102147 3.15 Ac

15-102146 3.15 Ac

15-102149 552-231

15-102150 552-231

15-102148 3.15 Ac

15-102147 3.15 Ac

15-102146 3.15 Ac

15-102149 552-231

15-102150 552-231

15-102148 3.15 Ac

15-102147 3.15 Ac

15-102146 3.15 Ac

15-102149 552-231

15-102150 552-231

15-102148 3.15 Ac

15-102147 3.15 Ac

15-102146 3.15 Ac

15-102149 552-231

15-102150 552-231

15-102148 3.15 Ac

15-102147 3.15 Ac

15-102146 3.15 Ac

15-102149 552-231

15-102150 552-231

15-102148 3.15 Ac

15-102147 3.15 Ac

15-102146 3.15 Ac

15-102149 552-231

15-102150 552-231

15-102148 3.15 Ac

15-102147 3.15 Ac

15-102146 3.15 Ac

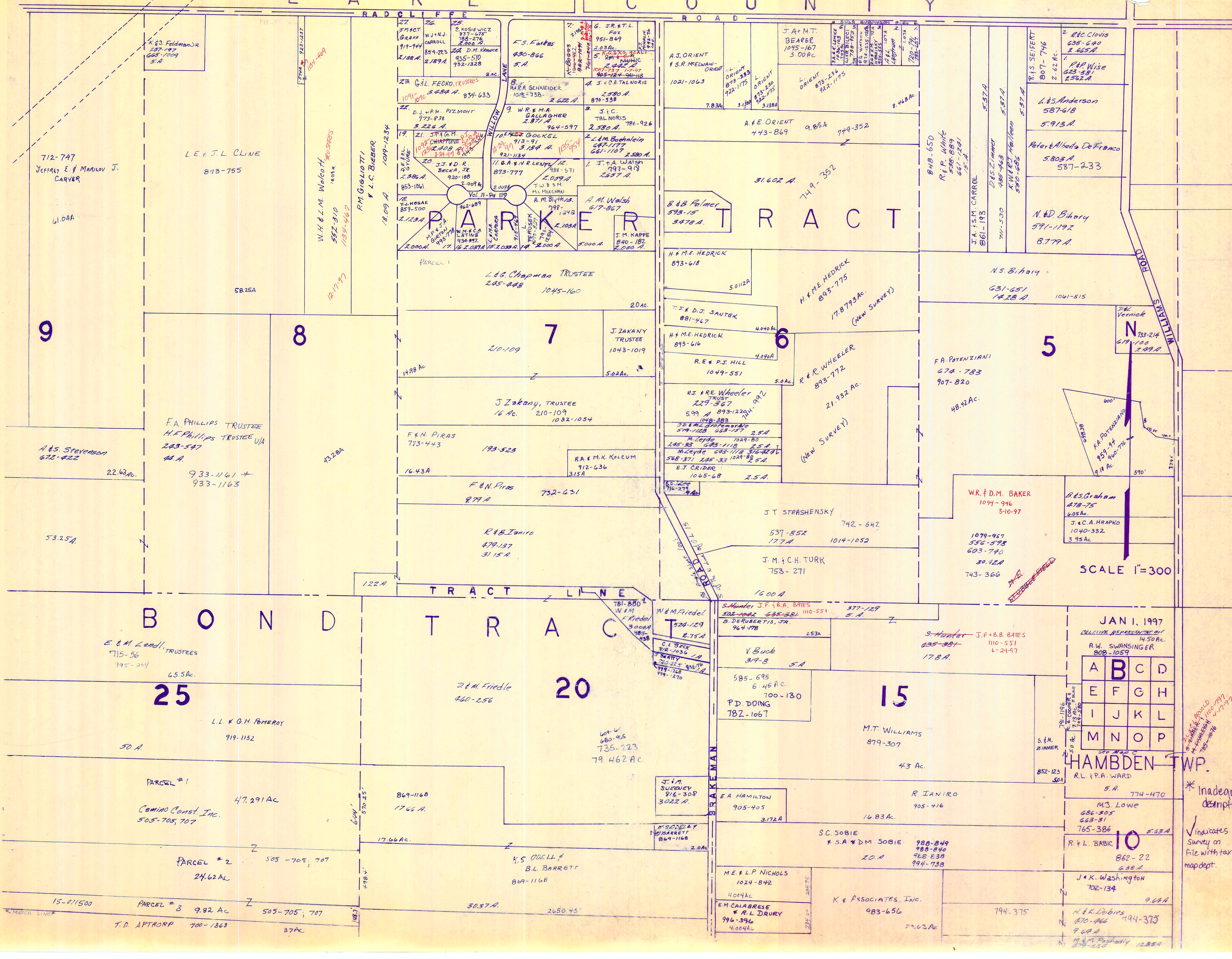
15-102149 552-231

15-102150 552-231

15-102148 3.15 Ac

15-102147 3.15 Ac

15-102146 3.1



712-747
JEFFREY E & MARION J.
CARVER

LE & J.L. CLINE
813-755

W.H. & L.M. WOLCOH
552-310
1134-462
1817-97

R.M. GIGLIOTTI
& L.C. BIEBER
1019-1234

1809 A.

P A R K E R

T R A C T

9

8

7

6

5

A & S. STEVENSON
672-922

F.A. PHILLIPS TRUSTEE
H.F. PHILLIPS TRUSTEE VIA
243-547
44 A.
933-1161 +
933-1163

PARCEL #1
L.G. CHAPMAN TRUSTEE
245-448 1045-160

J. ZAKANY TRUSTEE
1043-1019

J. ZAKANY, TRUSTEE
16 AC. 210-109
1032-1054

F. & N. PIRAS
773-443

F. & N. PIRAS
979 A 732-631

R. & B. IANIRO
479-137
3115 A.

H. & M.E. HEDRICK
893-618

T. J. & D.J. SANTEK
881-447

H. & M.E. HEDRICK
893-616

R.E. & P.J. HILL
1049-551

R.S. & R.E. WHEELER
229-367

M. LEYD
1029-80

E.J. CRIDER
1065-68

J.T. STRASHENSKY
742-642

J.M. & C.H. TURK
753-271

1600 A

H. & M.E. HEDRICK
893-775

17.8793 AC.
(NEW SURVEY)

R. & R. WHEELER
893-772

21.932 AC.
(NEW SURVEY)

J.T. STRASHENSKY
742-642

J.M. & C.H. TURK
753-271

1014-1052

1600 A

17.8 A.

17.8 A.

F.A. POTENZIANI
674-783
907-820

48.42 AC.

1079-959
556-578
603-740
30.42 A

743-366

WR. & D.M. BAKER
1094-946
3-10-97

B. & S. GRAHAM
478-75
4.05 AC.

J. & C.A. HRAPKO
1040-332
3.95 AC.

N.S. BIHARY
631-651
14.28 A.

1061-515

1061-515

1061-515

1061-515

1061-515

1061-515

1061-515

1061-515

1061-515

1061-515

1061-515

1061-515

1061-515

1061-515

1061-515

1061-515

1061-515

1061-515

1061-515

1061-515

1061-515

1061-515

1061-515

E. & M. LEIDL, TRUSTEES
715-56
995-204
65.5 AC.

25

L.L. & G.H. FOMEROY
919-1152

50 A.

PARCEL #1
CAMINO CONST. INC.
505-705, 707

PARCEL #2
24.62 AC

15-011500
PARCEL #3
T.D. APTHORP
700-1363

9.82 AC

505-705, 707

37 AC

B O N D

T R A C T

L I N E

20

2 & M. FRIEDLE
460-256

79.462 AC

869-1168
1766 A.

17.66 AC.

505-705, 707

24.62 AC

9.82 AC

505-705, 707

37 AC

20

15

JAN 1, 1997
RELATIVE REPRESENTATION
14.50 AC.
A.W. SWANSINGER
808-1059

A	B	C	D
E	F	G	H
I	J	K	L
M	N	O	P

HAMBDEN TWP.
R.L. & P.A. WARD
5 A.
774-470

M.S. LOWE
686-805
663-31
765-386

R. & L. BABIC
862-22
638 A.

J. & K. WASHINGTON
702-134

9.64 A

H. & K. DOBIES
470-466
794-375

9.64 A

M. & M. PASHEDI
279-252

* Inadequate
description
✓ indicates
survey on
file with tax
map dept.

SCALE 1"=300

DR. VERNICK
733-214
619-100
2.99 A

F.A. POTENZIANI
674-783
907-820

48.42 AC.

1079-959
556-578
603-740
30.42 A

743-366

WR. & D.M. BAKER
1094-946
3-10-97

B. & S. GRAHAM
478-75
4.05 AC.

J. & C.A. HRAPKO
1040-332
3.95 AC.

N.S. BIHARY
631-651
14.28 A.

1061-515

1061-515

1061-515

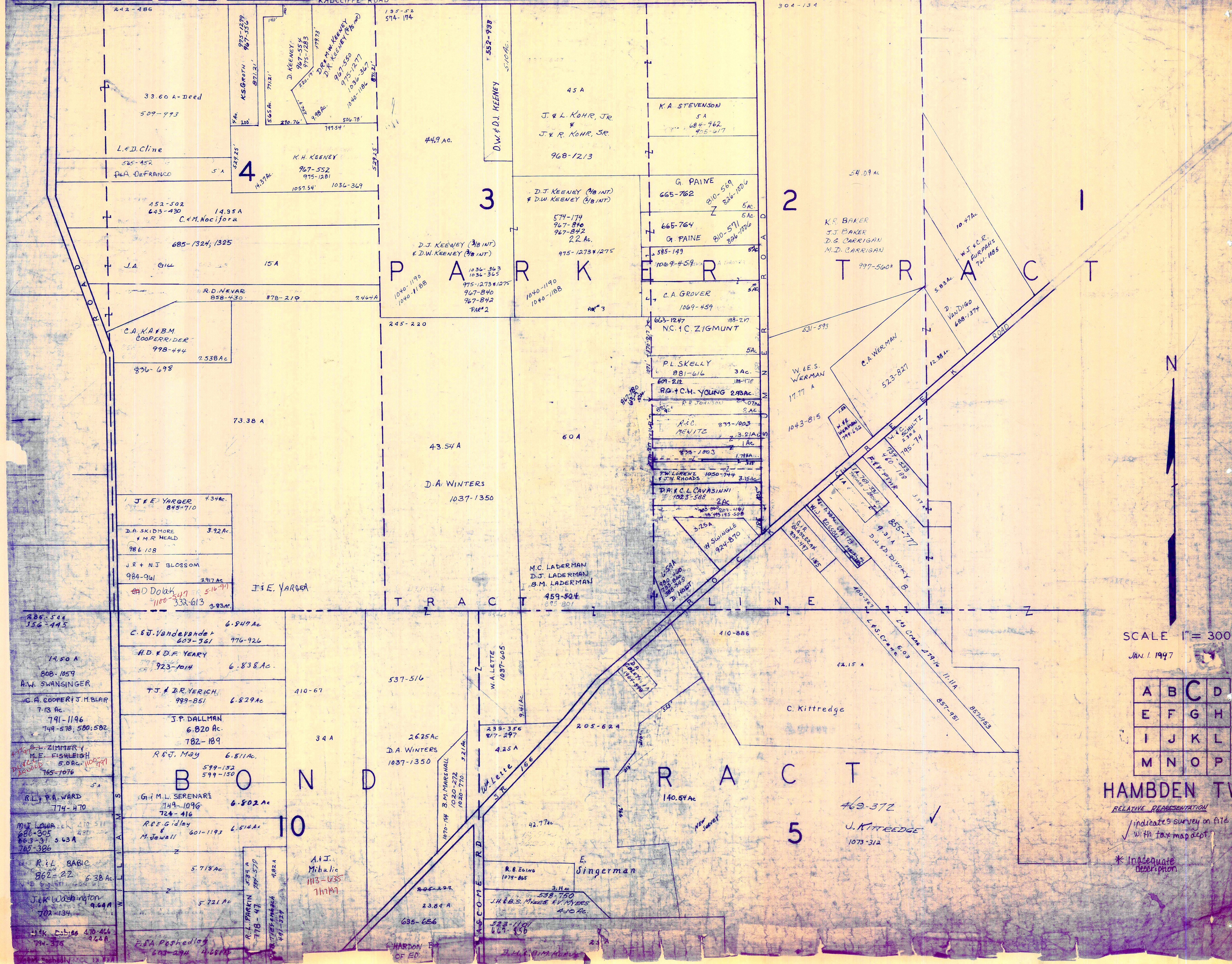
1061-515

1061-515

1061-515

1061-515

L A K E C O U N T Y



SCALE 1" = 300'
JAN. 1, 1947

A	B	C	D
E	F	G	H
I	J	K	L
M	N	O	P

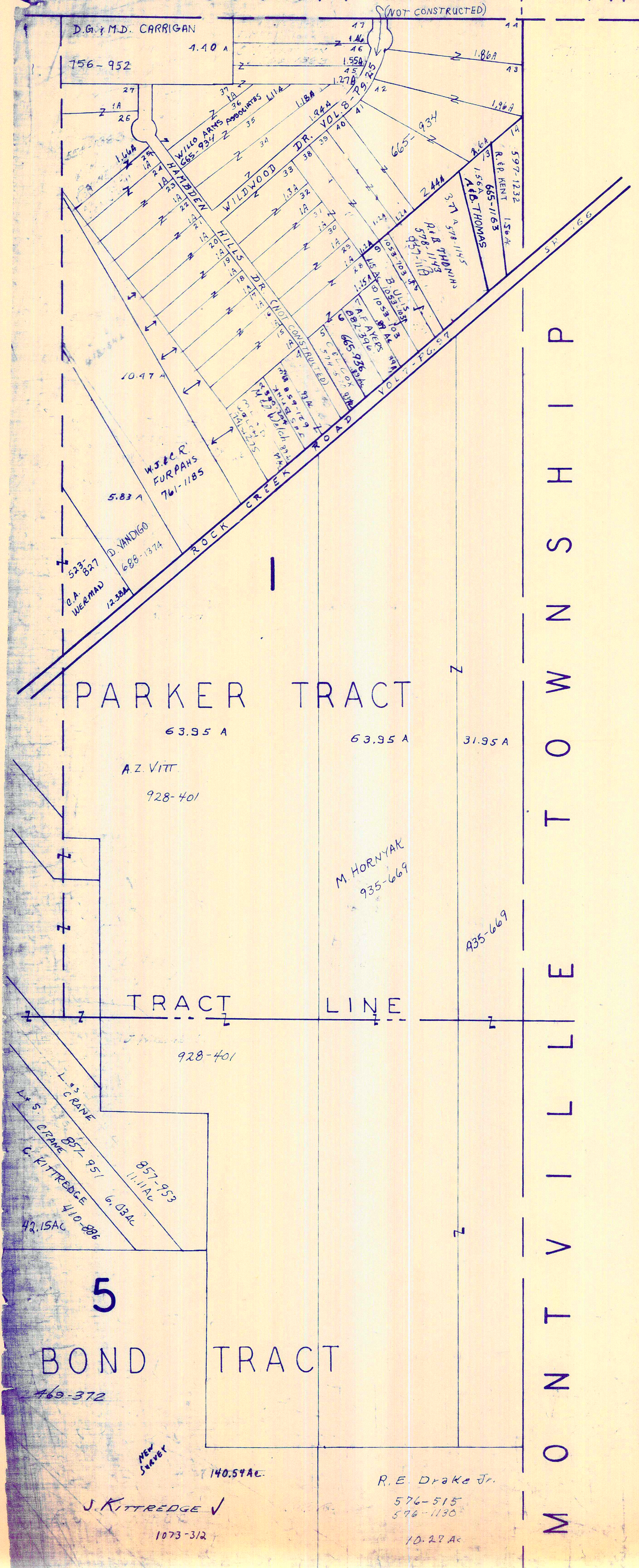
HAMBDEN TWP

RELATIVE REPRESENTATION
/ indicates survey on file
✓ with tax map dept.

* Inadequate description

LAKE COUNTY

THOMPSON TWP.



M O N T V I L L E T O W N S H I P



SCALE 1" = 300'
 JAN. 1, 1927

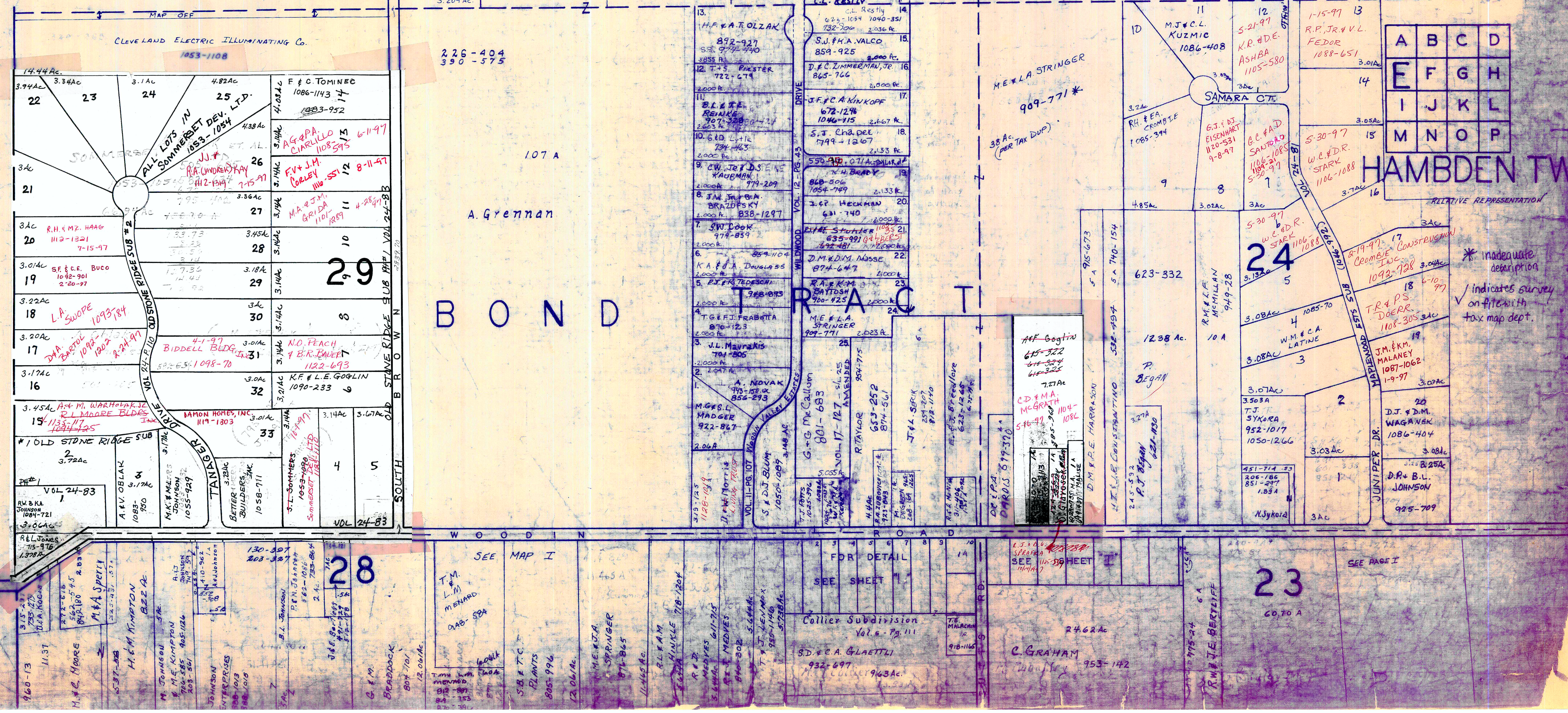
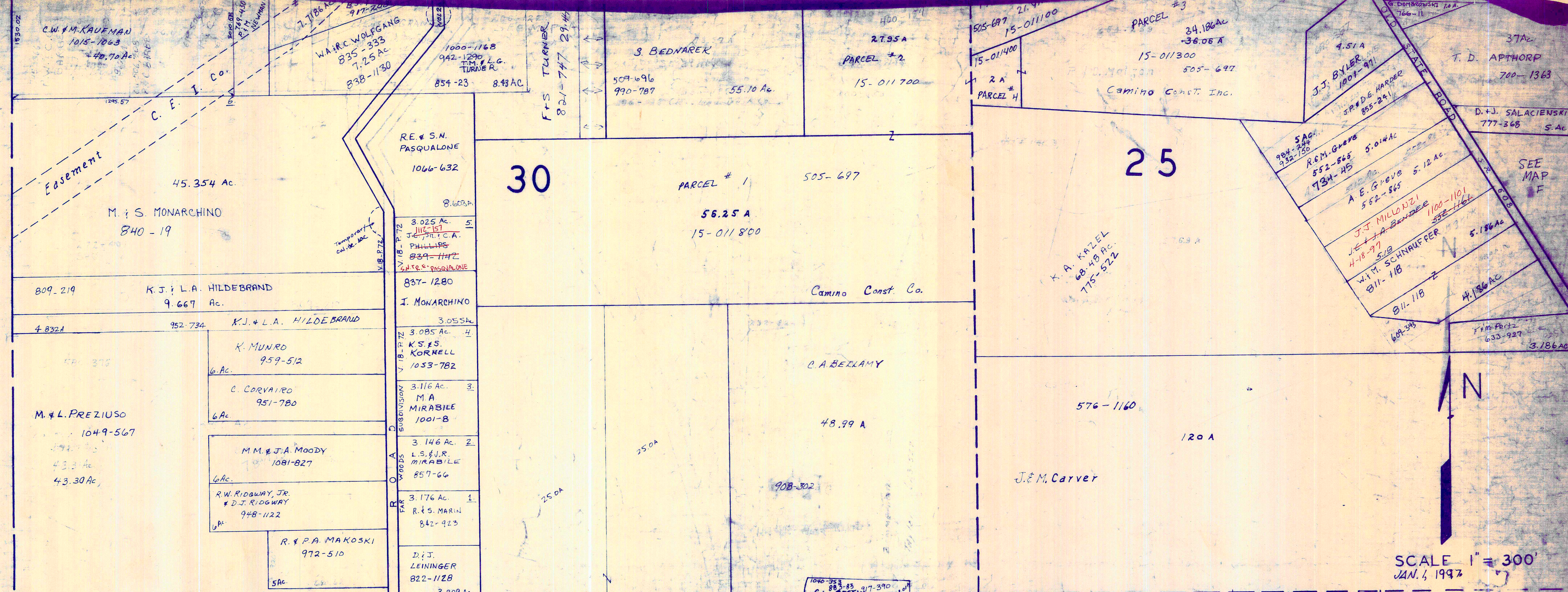
A	B	C	D
E	F	G	H
I	J	K	L
M	N	O	P

HAMB DEN TWP.

RELATIVE REPRESENTATION

indicates survey on file with tax map dept.
 * Inadequate description

CHARLESTON TOWNSHIP



F. & E. Covert

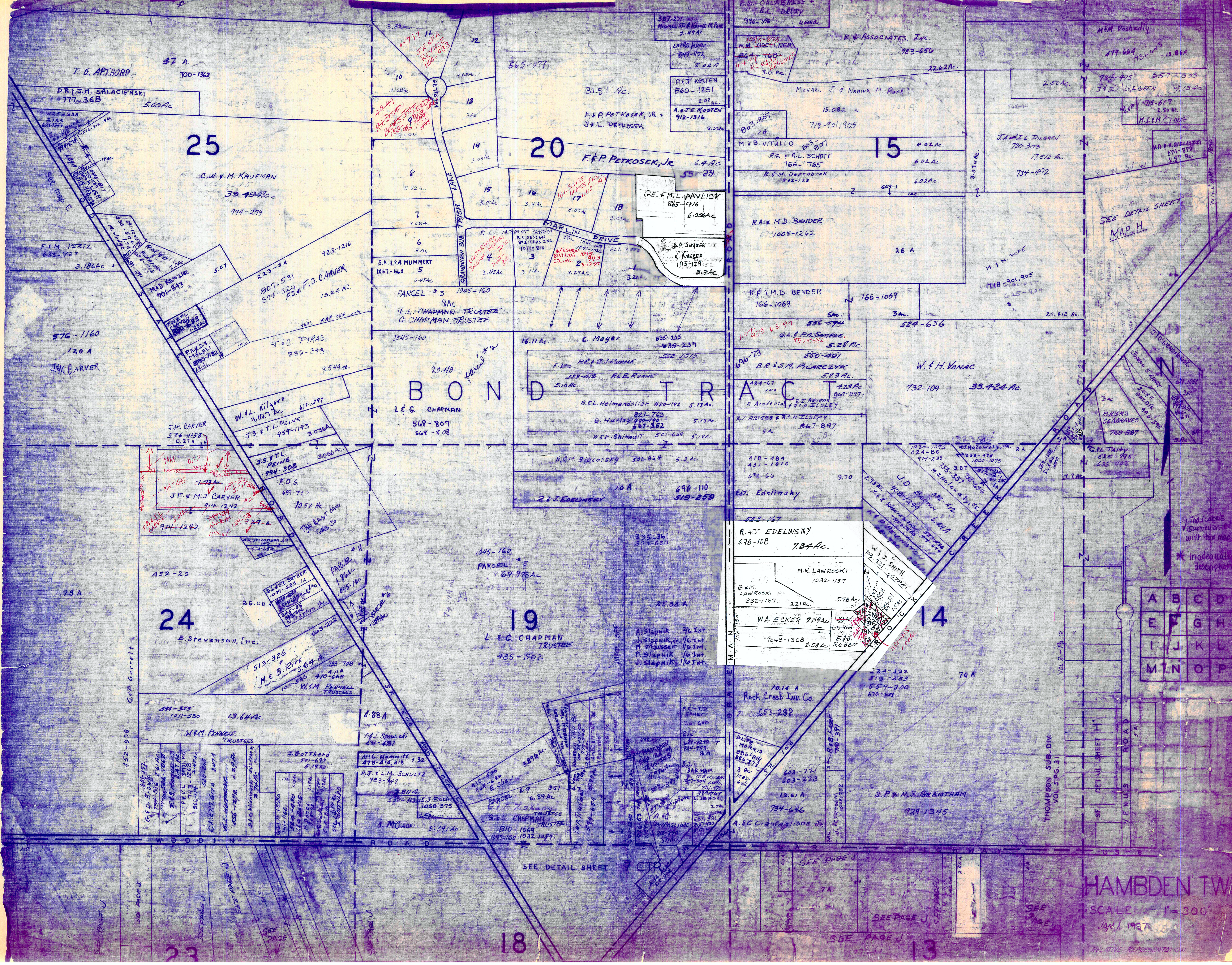
SEE MAP I

FOR DETAIL SEE SHEET

SEE PAGE I

Collier Subdivision Vol. 6 - Pg. 111

C. GRAHAM 953-142



BOND TRACT

HAMB DEN TWP

SCALE 1" = 300'

Jan. 1997

RELATIVE REPRESENTATION

A	B	C	D
E	F	G	H
I	J	K	L
M	N	O	P

Indicates
V survey on file
with tax map dept

* Inadequate
description

THOMPSON SUB. DIV.
VOL. 3 PG. 31

VOL. 8 - 1A, 12

SEE DETAIL SHEET
MAP H

SEE PAGE J

SEE PAGE J

SEE PAGE J

SEE PAGE J

SEE PAGE J

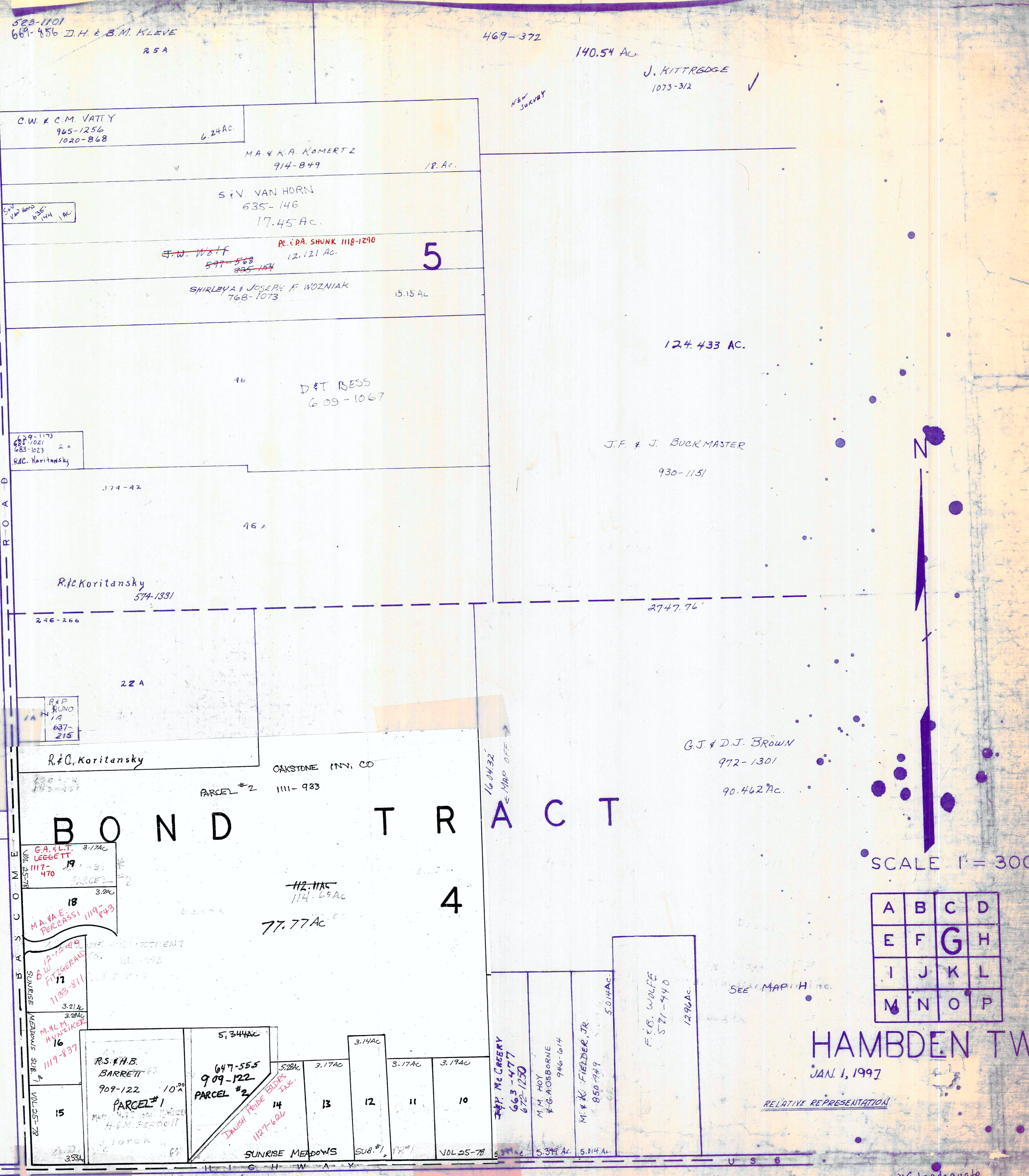
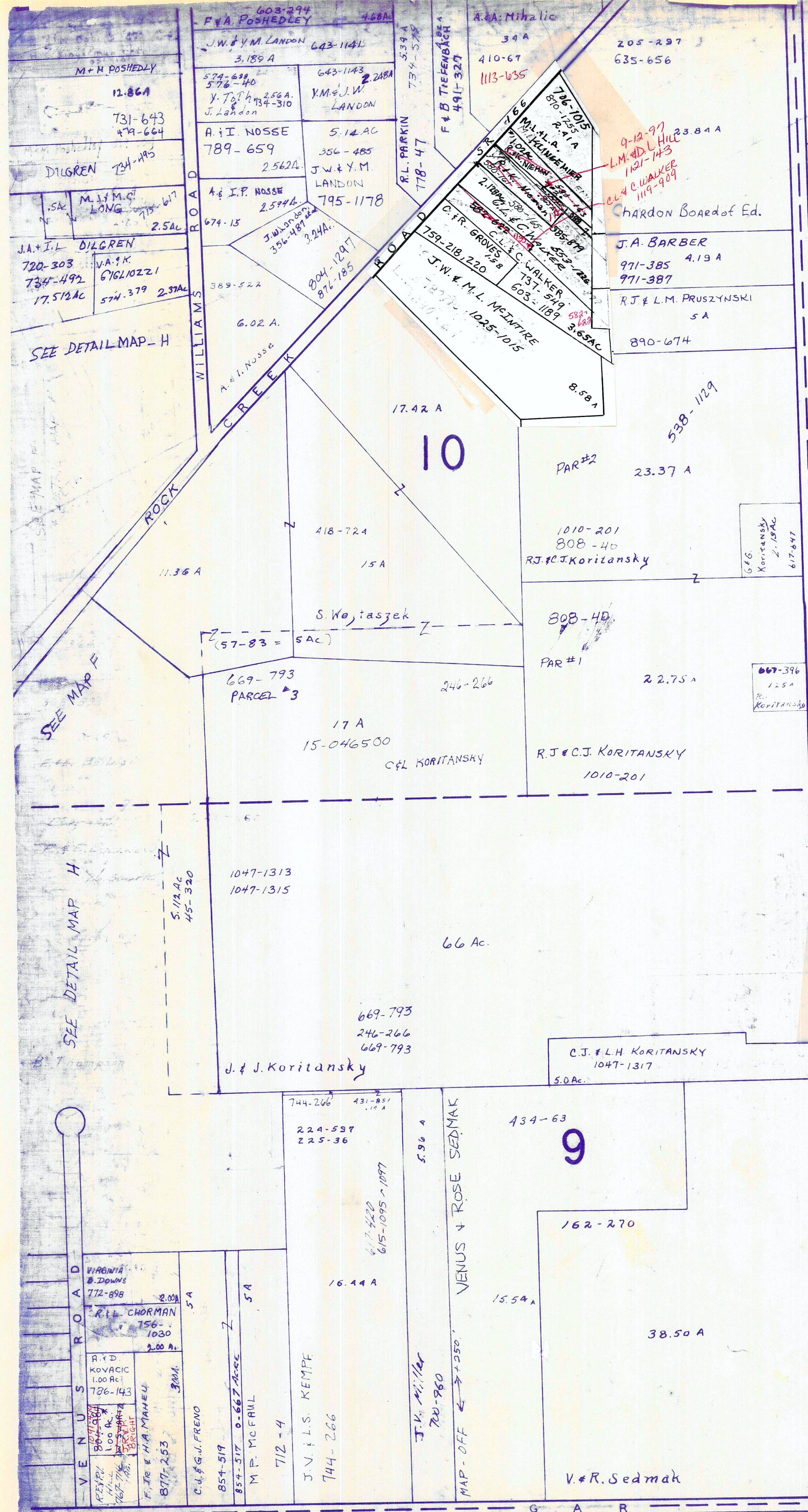
SEE PAGE J

SEE PAGE J

SEE PAGE J

SEE PAGE J

SEE PAGE J



BOND TRACT

SCALE 1" = 300'

A	B	C	D
E	F	G	H
I	J	K	L
M	N	O	P

HAMB DEN TW
JAN. 1, 1997

RELATIVE REPRESENTATION

* Inadequate description

✓ Indicates survey on file with tax map dept.

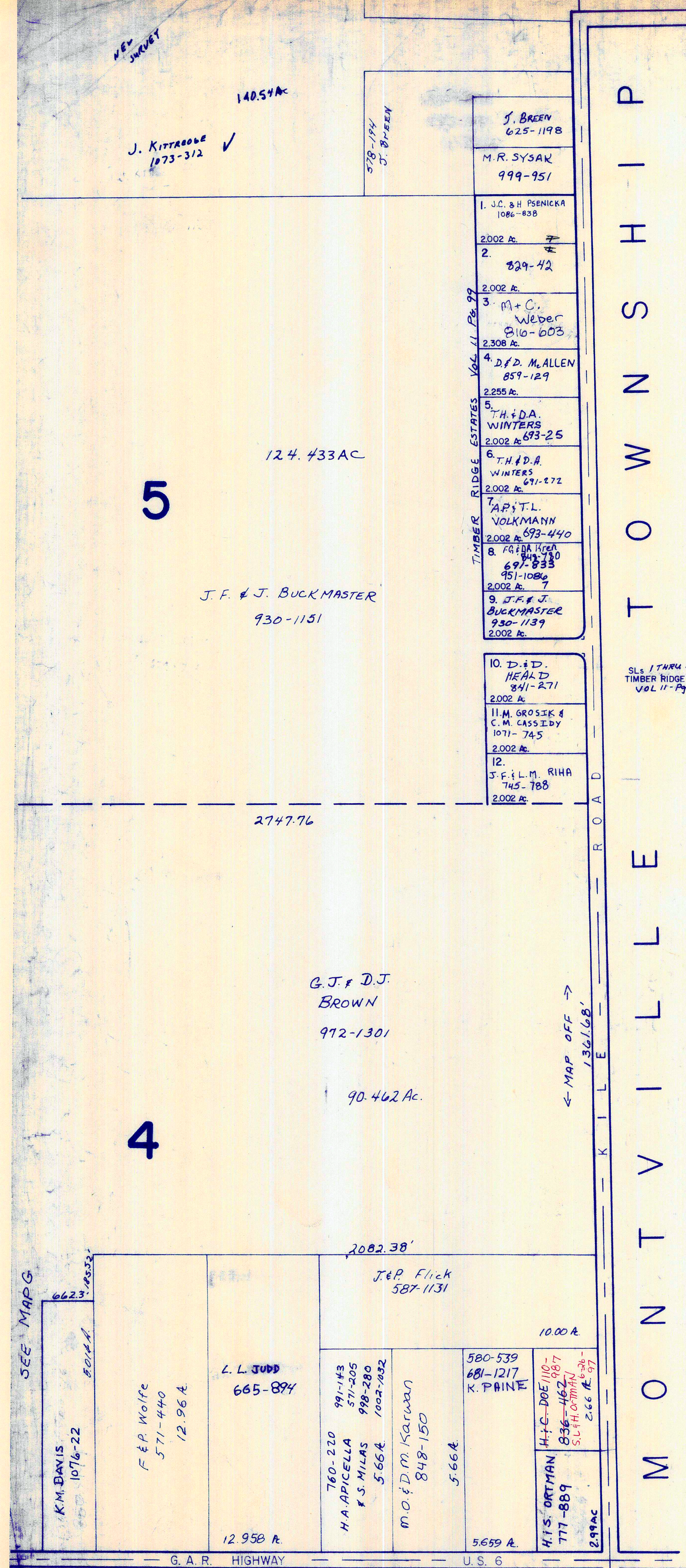
SEE DETAIL MAP - H

SEE MAP F

SEE DETAIL MAP H

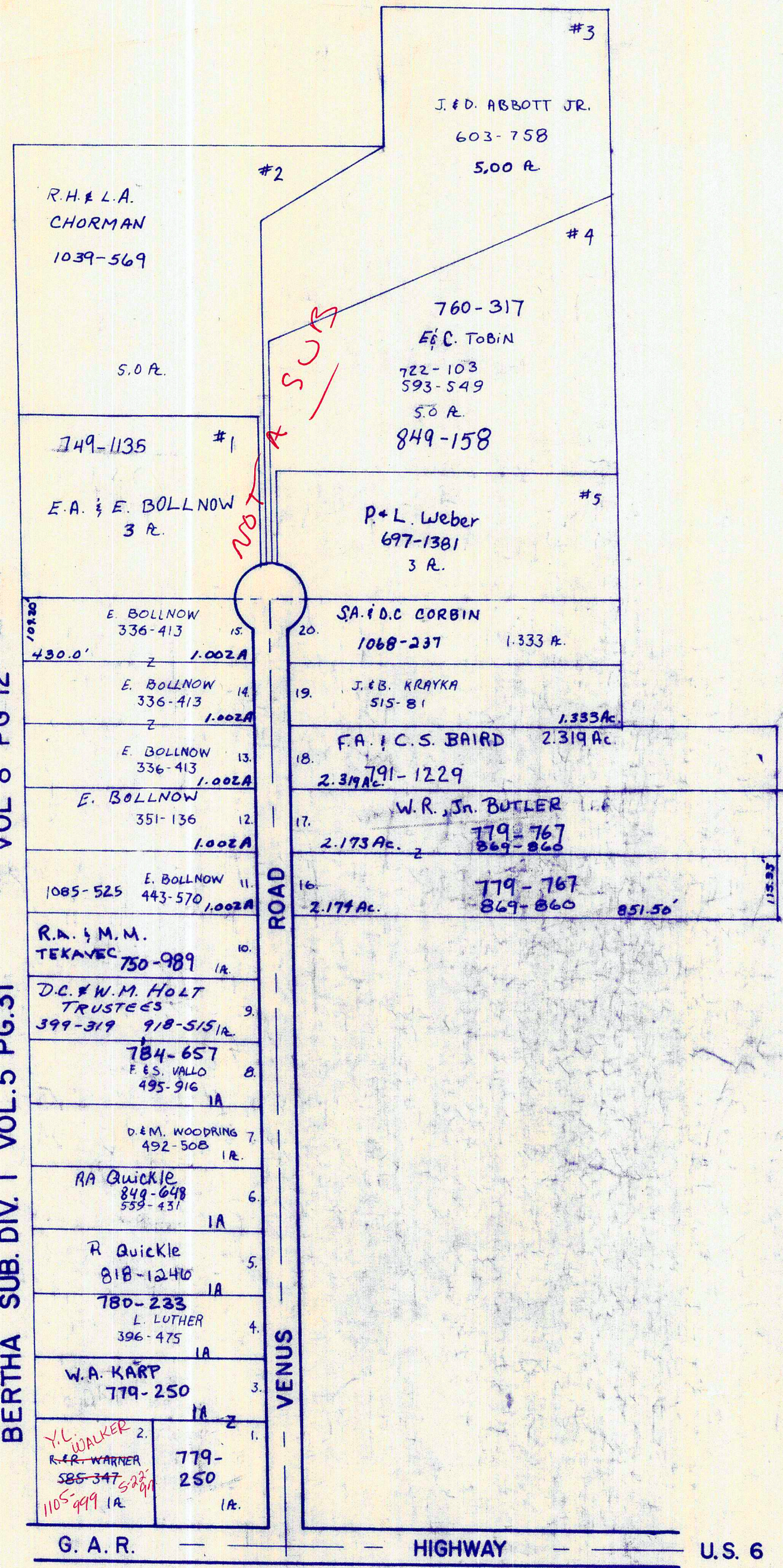
SEE PAGE "K"

SEE PAGE K

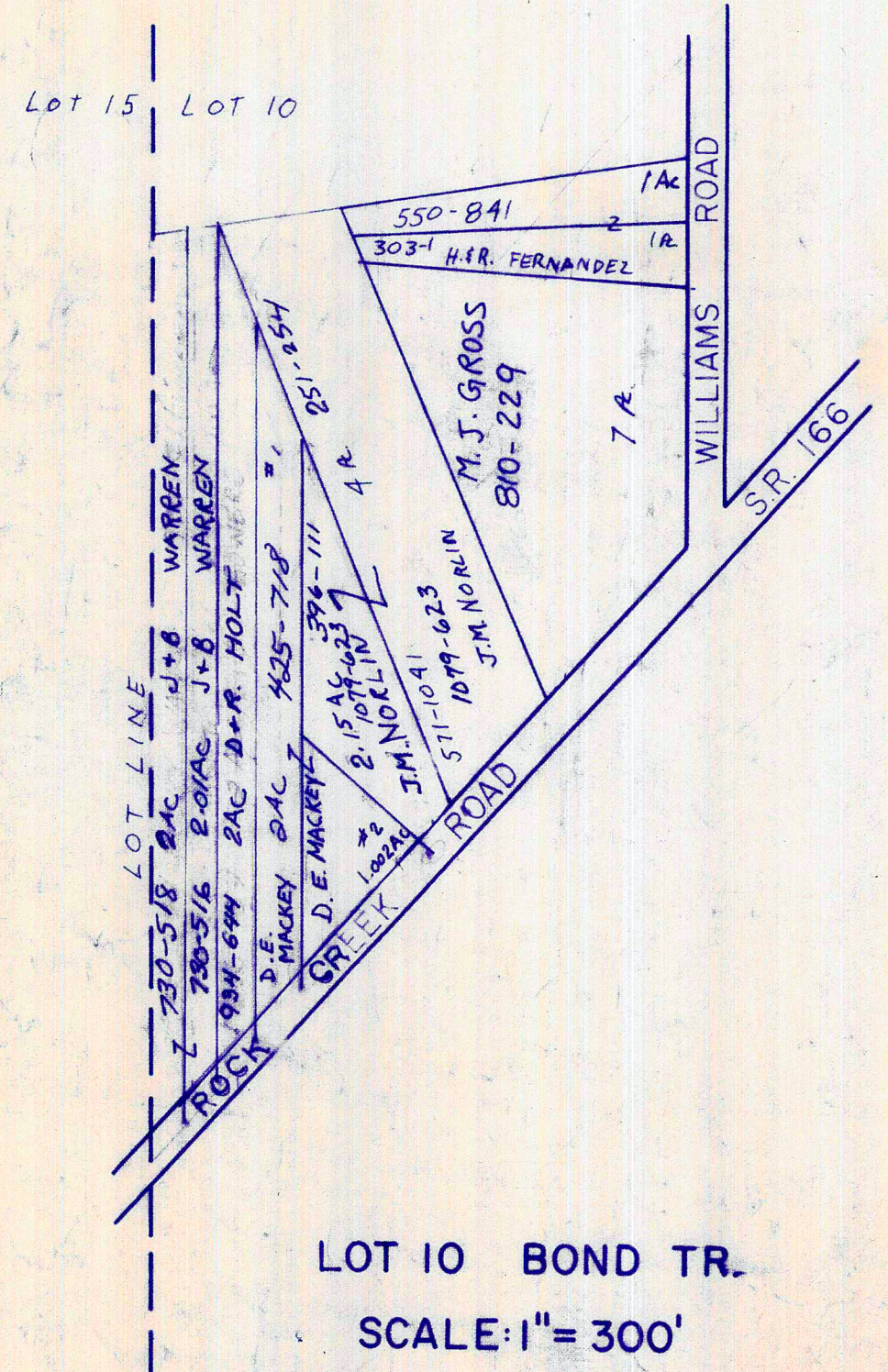


SUB. DIV. NO. 2
VOL 8 PG 12

BERTHA SUB. DIV. 1 VOL. 5 PG. 31



LOT 9 & 14 BOND TR.
SCALE: 1" = 200'



LOT 10 BOND TR.
SCALE: 1" = 300'

HAMBDEN TWP.

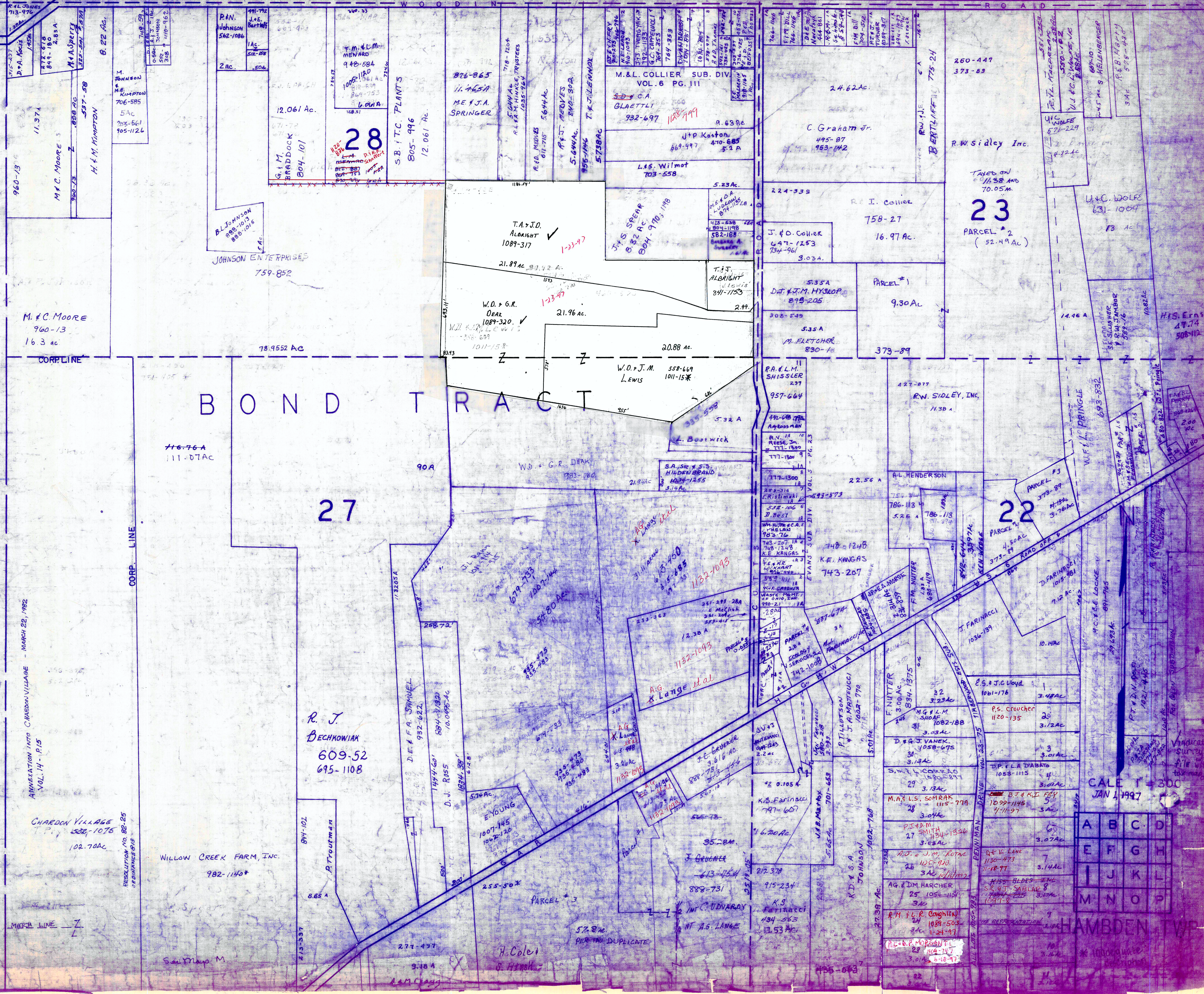
RELATIVE REPRESENTATION

SCALE 1" = 300'
JAN. 1, 1997

A	B	C	D
E	F	G	H
I	J	K	L
M	N	O	P

* Inadequate description
indicates survey on file with tax map dept.

SEE MAP E



ANNEXATION INTO CHARDON VILLAGE - MARCH 22, 1992
 VOL. 14 - P. 15
 CHARDON VILLAGE 532-1075
 102.70 AC
 RESOLUTION NO. 82-25
 OF MARCH 22, 1992

WILLOW CREEK FARM, INC.
 982-1140*

716-76A
 111.07 AC

78.9552 AC

21.89 AC

21.96 AC

20.88 AC

21.96 AC

20.88 AC

20.88 AC

20.88 AC

20.88 AC

20.88 AC

20.88 AC

20.88 AC

20.88 AC

20.88 AC

20.88 AC

20.88 AC

20.88 AC

20.88 AC

20.88 AC

20.88 AC

20.88 AC

20.88 AC

20.88 AC

20.88 AC

20.88 AC

20.88 AC

20.88 AC

20.88 AC

20.88 AC

20.88 AC

20.88 AC

20.88 AC

20.88 AC

20.88 AC

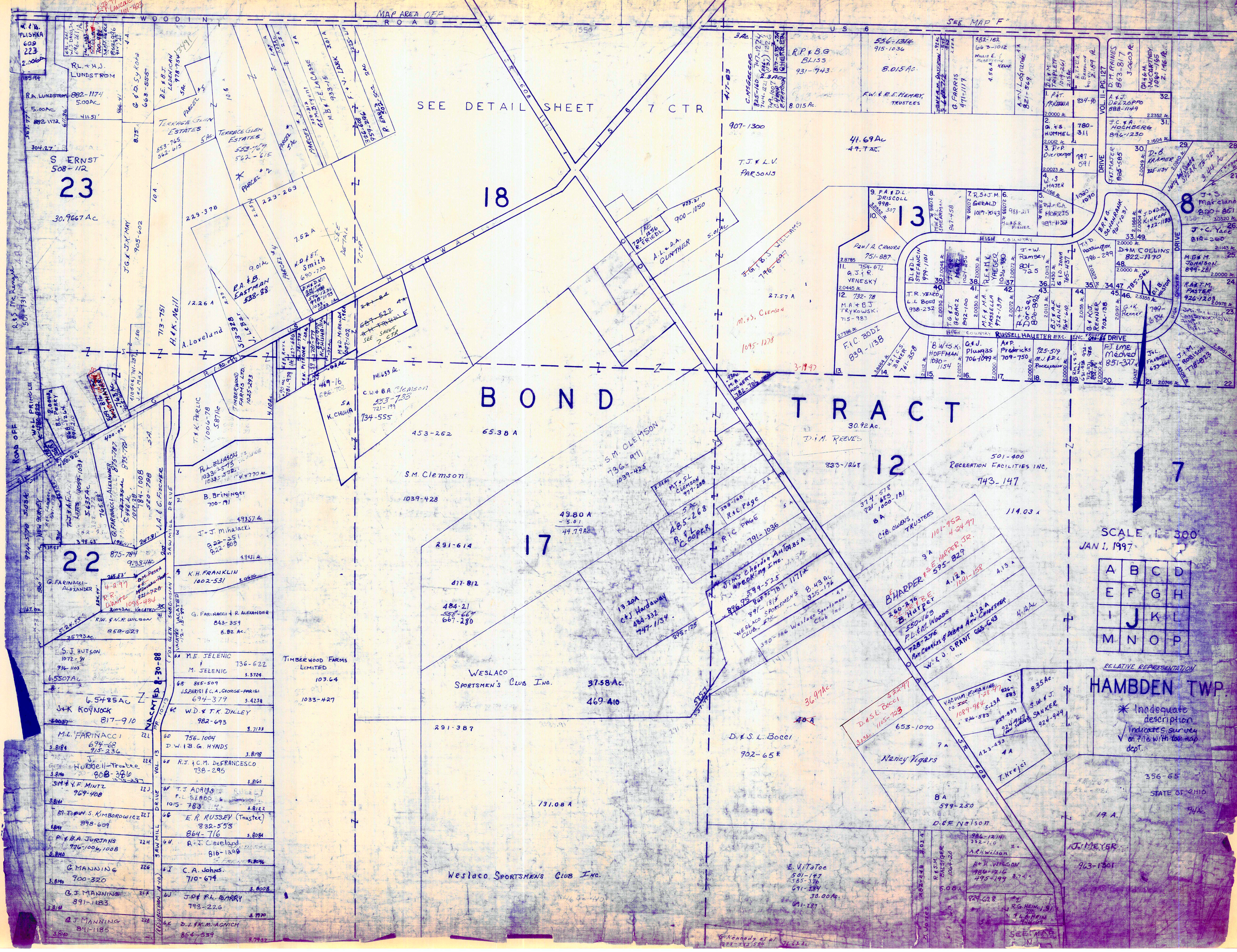
20.88 AC

20.88 AC

20.88 AC

A	B	C	D
E	F	G	H
I	J	K	L
M	N	O	P

CALE T # 300
 JAN 1, 1997



SEE DETAIL SHEET 7 CTR

18

BOND

TRACT

17

12

7

S ERNST
508-112
23
30.9667 Ac

22

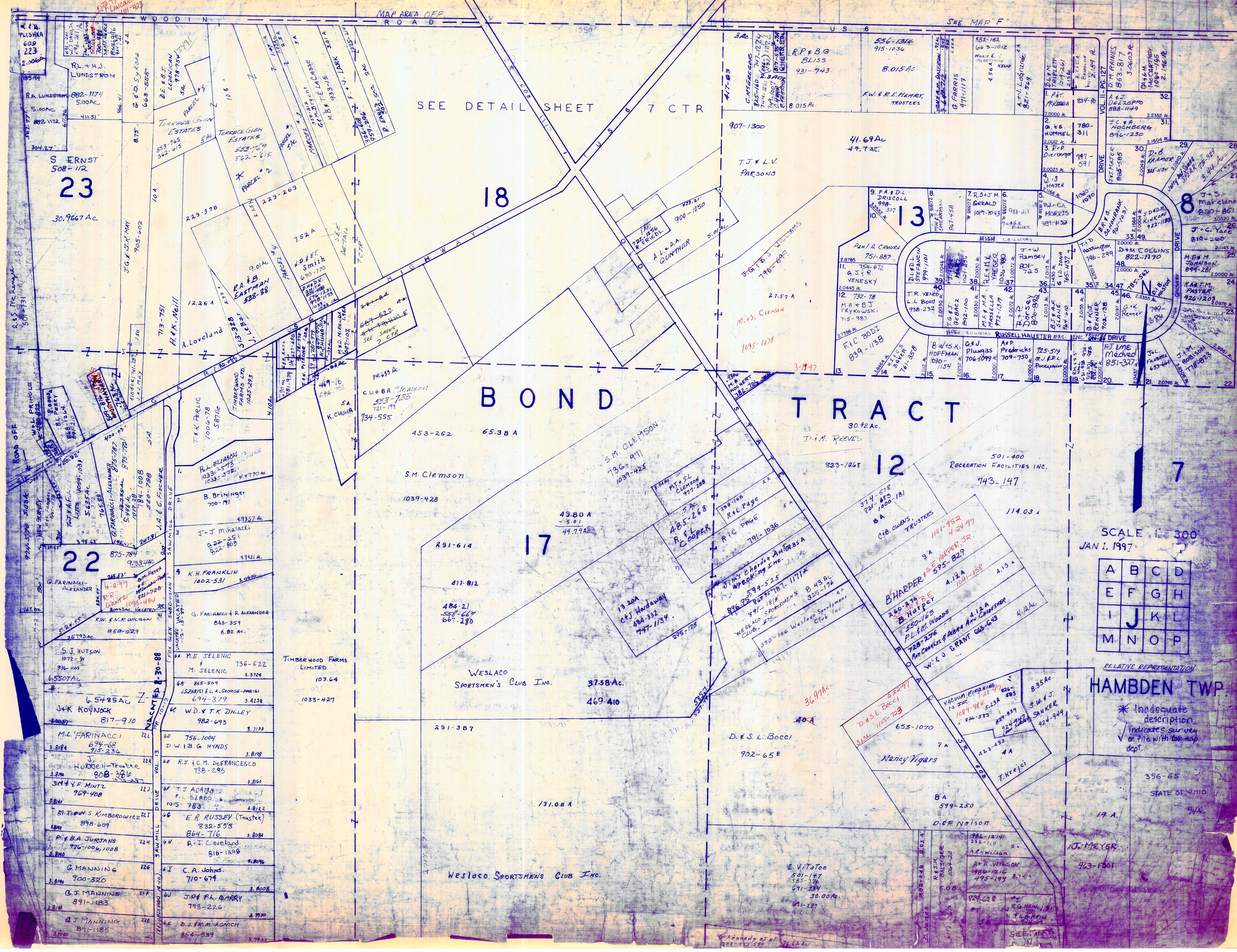
58	S. J. HUTSON 1072-31 936-1103 4.5507 Ac
59	L. S. FARINACCI ALEXANDER 843-359 8.82 Ac
60	M. E. JELENIC M. JELENIC 736-622 5.5724
61	608 855-509 J. SPARISI & C. A. GEORGE-PARISI 694-379 5.4258
62	606 W. D. & T. K. DILLEY 982-693 3.7133
63	604 756-1004 D. W. I. B. G. HYNDS 3.8798
64	602 R. J. & C. M. DEFRANCESCO 738-295 3.8160
65	600 T. J. ADAMS P. L. 52800 1015-783 3.8122
66	598 E. R. RUSSEY (Trustee) 832-553 864-716 3.8084
67	596 R. J. Cleveland 816-1298 3.8076
68	594 C. A. Johns 710-674 3.8008
69	592 J. D. & R. BARRY 793-226 3.7970
70	590 D. N. & K. M. AGNICH 854-539 3.7932

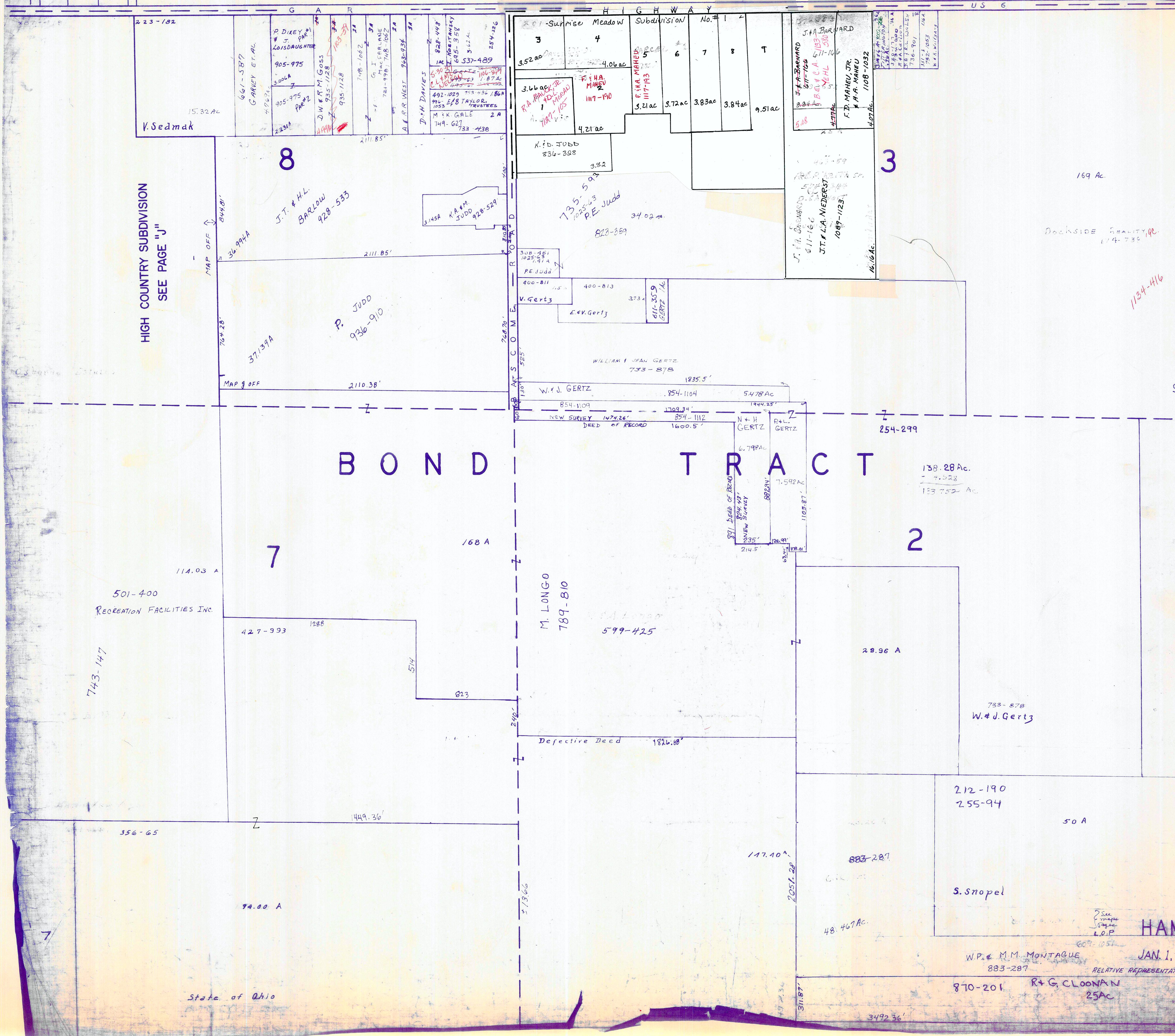
SCALE 1" = 300'
JAN 1, 1997

A	B	C	D
E	F	G	H
I	J	K	L
M	N	O	P

RELATIVE REPRESENTATION
HAMB DEN TWP.

* Inadequate description
indicates survey
on file with tax map
dept.

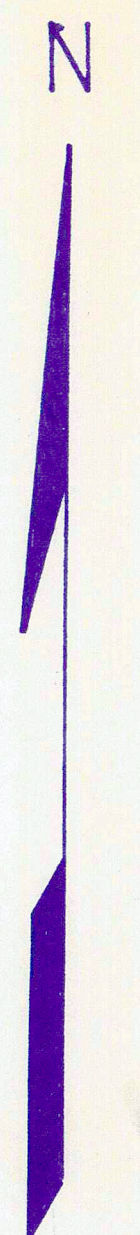




HIGH COUNTRY SUBDIVISION
SEE PAGE "J"

BOND TRACT

SCALE 1" = 300'



✓ indicates survey on file with tax map dept.
* inadequate description

A	B	C	D
E	F	G	H
I	J	K	L
M	N	O	P

HAMB DEN TWP

WP. & M.M. MONTAGUE
883-287
JAN. 1, 1997

RELATIVE REPRESENTATION
R+G. CLOONAN
25AC

State of Ohio

SEE MAP L.O.P.

3

169.00 A.

Dockside Realty, Inc.
674-738

1134-416

BOND TRACT

12-17-97

R O A D T O W N S H I P M O N T V I L L E

2

1	* 828-36 701-877 T.E. MICO	229-504 229 AC	5A
2	430-952 R. & B. Grant 933-950 ss K.S. & K.A. BENA	498 A.	
3	920-922 874-565	498 A.	
4	A.C. CRAMBE II 1098-110 A 657-205 PLANTON	247-47 255-367 257-748	
5	R.L. HART 1053-9 514-97	4.98 AC 4.98 AC	
6	R. Kovars	4.98 AC	
7	281-345 460-398 H. Tomasin	4.98 AC.	
8	270-459 460-400 844-206	4.98 AC.	
9	D.J. SHELIGA 1051-631 612-117	259-551 4.98 AC	
10	424-826 A.M. Burnett	580-177 4.98 AC	
11	MAR & ALICE L. KOCAB 726-586	477-502 4.98 AC.	
12	P.M. & M.A. MALLOY 5-187 AC	997-287	
	817-625 817-627 S. Snopel	50 A.	
	W.P. & M.M. MONTAGUE 801 885-287	48.467 AC.	
	R.M. & G.A. CLOONAN 870-201	25 AC.	

N

SCALE 1" = 300'

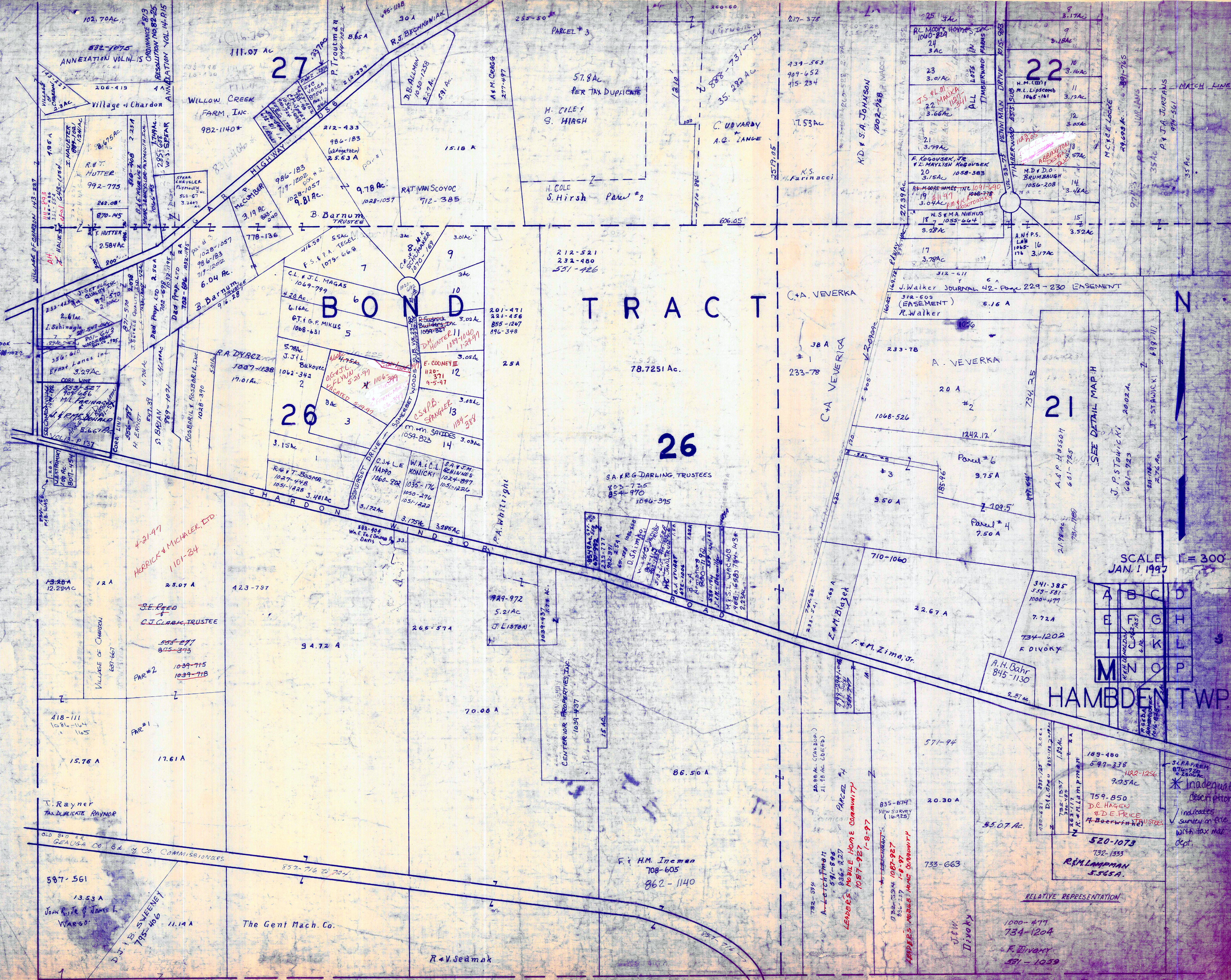
RELATIVE REPRESENTATION

A	B	C	D
E	F	G	H
I	J	K	L
M	N	O	P

HAMB DEN TWP.
JAN 1 1997

* Inadequate description
Indicates survey on file with tax map dept.

CHARDON TOWNSHIP



BOND TRACT

26

22

21

SCALE 1" = 300' JAN. 1 1997

A	B	C	D
E	F	G	H
I	J	K	L
M	N	O	P

HAMBLEN TWP

* Inadequate description / Inadequate survey on file with tax map dept.

RELATIVE REPRESENTATION

CHARDON TOWNSHIP & Co. COMMISSIONERS

John R. De & James L. Wargo

The Gent Mach. Co.

R & V Seimak

F & H M. Ineman 708-605 862-1140

LEADERS' MOBILE HOME COMMUNITY

LEADERS' MOBILE HOME COMMUNITY

R & M LAMPMAN 5.565A

F. Divoky 591-1059

A. H. Bahr 845-1130

F. Divoky 734-1202

7.72A

1000-477

341-385

519-581

22.67 A

710-1060

9.50 A

1242.12'

1068-526

20 A

A. VEVERKA

233-78

J. Walker

J. Walker

J. Walker

J. Walker

J. Walker

J. Walker

J. Walker

J. Walker

J. Walker

J. Walker

J. Walker

J. Walker

J. Walker

J. Walker

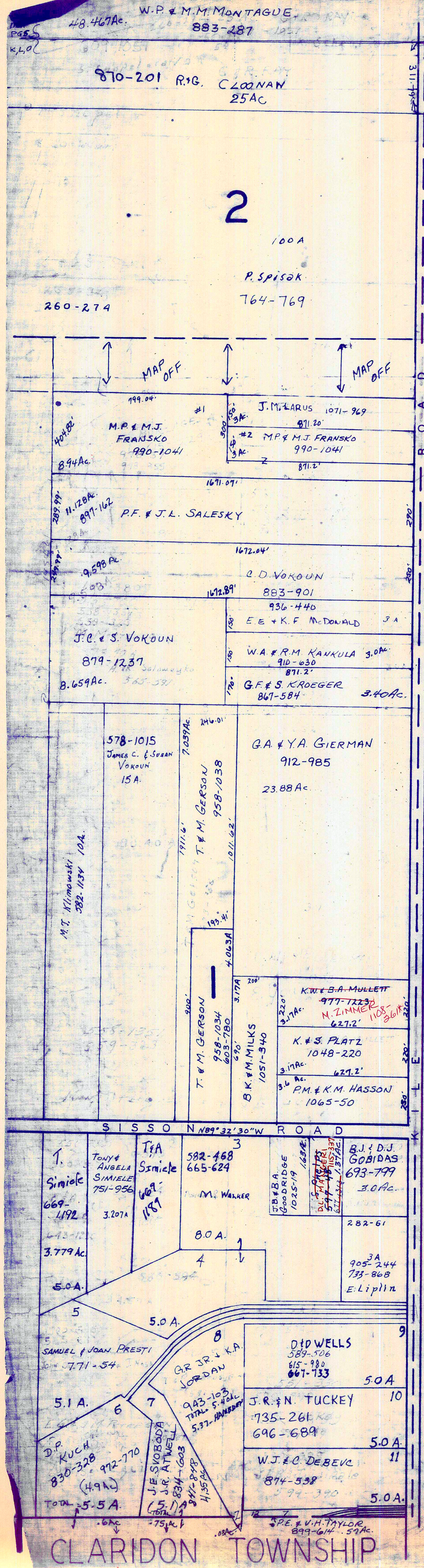
J. Walker

J. Walker

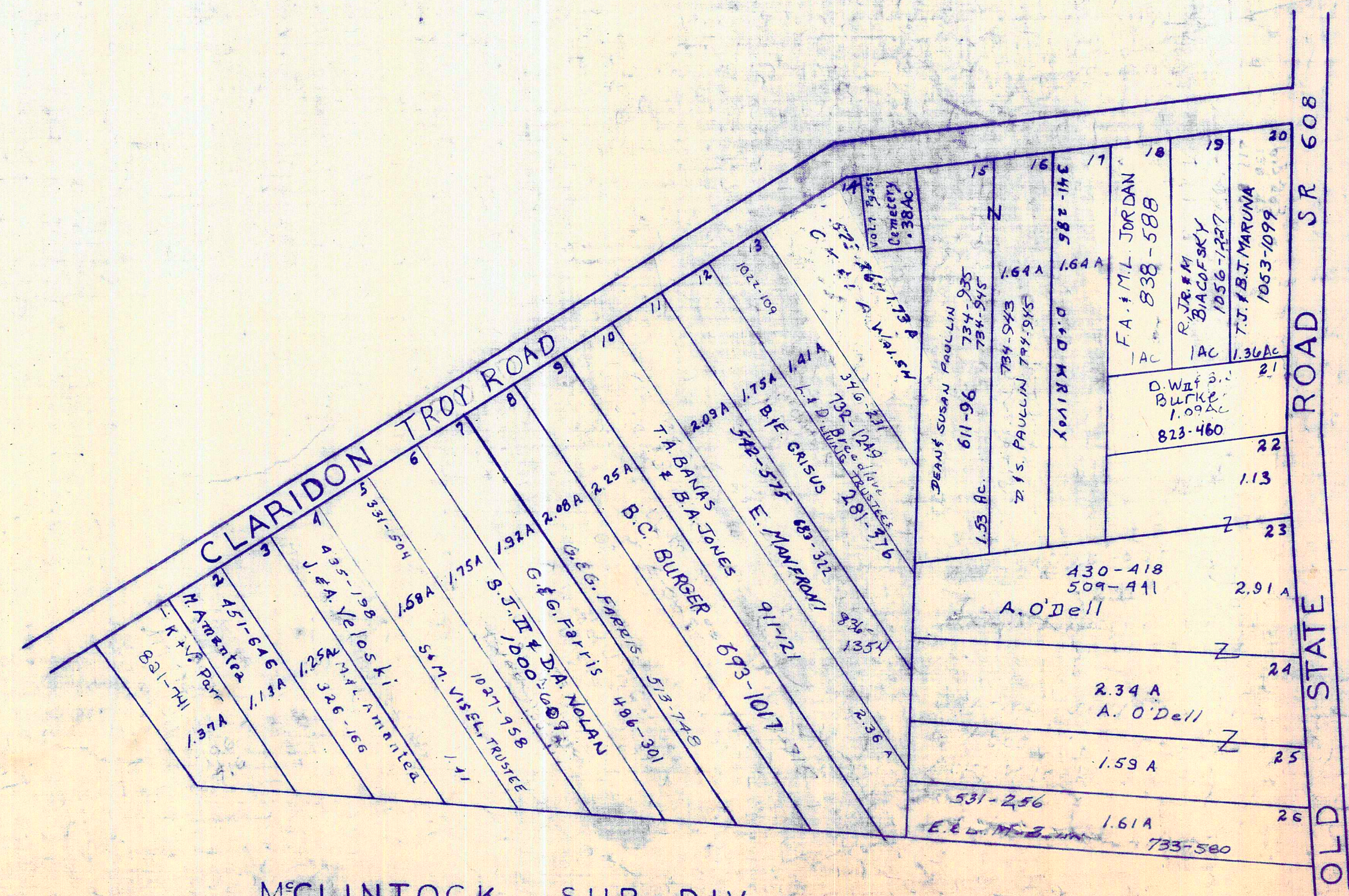
J. Walker

J. Walker

J. Walker



MONTVILLE TOWNSHIP



SCALE 1" = 300'
JAN. 1, 1997

A	B	C	D
E	F	G	H
I	J	K	L
M	N	O	P

HAMB DEN TWP.

RELATIVE REPRESENTATION

* Inadequate description
✓ indicates survey on file with tax map dept.

